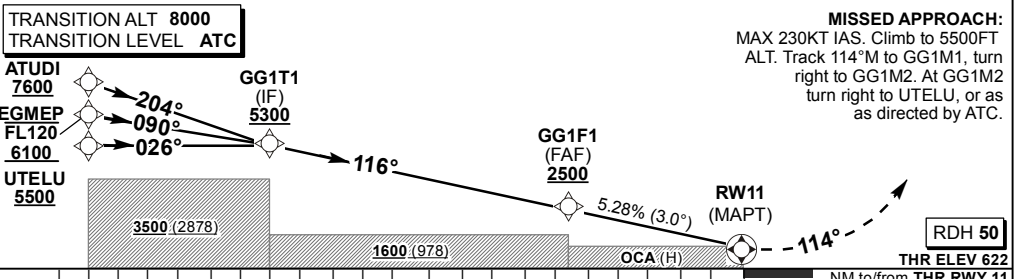


**COMMUNICATIONS FAILURE (SQUAWK 7600)**  
 When cleared for the RNAV (GNSS) RWY 11 APCH, complete the APCH. If not yet cleared for the RNAV (GNSS) RWY 11 APCH, continue to UTELU at 7000FT ALT or higher TAA. Hold for 5 MIN, descend to 5500FT ALT, then attempt another APCH.

**MISSED APPROACH COMMUNICATIONS FAILURE (SQUAWK 7600)**  
 Climb to 5500FT ALT. Track 114°M to GG1M1. At GG1M1, turn right to GG1M2. At GG1M2 turn right to UTELU and hold for 5 MIN, then attempt another APCH.

**WARNING**  
 APPROACH PROCEDURE SPEED RESTRICTED TO MAX 210KT IAS.

Distance from THR 11	5.7	5	4	3	2	1	
ADVISORY ALT(HGT)	2500 (1878)	2280 (1658)	1960 (1338)	1640 (1018)	1320 (698)	1000 (378)	



Straight-in Approach	LNAV	OCA (H)	A	B	C	D	GS	KT	80	100	120	140	160	180	
			2.8%	1030 (408)	1030 (408)	1030 (408)	1030 (408)	GG1F1 to THR	M:S	4:16	3:25	2:39	2:51	2:26	2:08
	VNAV		2.7%	940 (318)	940 (318)	940 (318)	940 (318)	Rate of descent	FPM	428	535	642	749	856	963
			2.5%	1280 (658)	1280 (658)	1280 (658)	1280 (658)	NOTE: 1. LNAV/VNAV RoD is 5.28%. 2. Turns prior MAPT prohibited. 3. Baro VNAV operations not authorised below 0° and MAX VPA 3.5° Temperature +70°C. 4. Nil Circling.							
Circling		Nil Circling													

CHANGE: NEW Procedure